

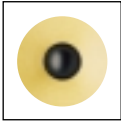
# MATRIX™ 802 Series 3

## Floor-standing loudspeaker system

### Product Summary

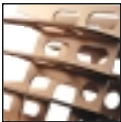
- The Matrix 802 has a highly linear, high efficiency motor system which delivers the long throw and symmetrical field required to produce an outstanding low frequency response.
- The Matrix 802 shares many of the key attributes of the Matrix 801. Its only real difference is size. Although only slightly taller than the Matrix 801, it occupies less than half the floor space. The Matrix 802 is therefore the natural choice where floorspace is limited, but the demand is still for a superb studio quality 3-way monitor.

### Technical highlights



**Kevlar®:** B&W developed and patented the method of using Kevlar® for loudspeaker cones to reduce unwanted standing waves. DuPont originally created Kevlar® for use in bulletproof vests.

- **Tweeter on top:** B&W's Tweeter on top technology ensures that the sound remains focused and time-sensitive and that the stereo-image is presented with unparalleled three dimensional accuracy.



**Matrix:** The basic construction of nearly all loudspeakers is exactly the same - panels of wood-based materials, bonded to form a rectangular box. B&W studied and evaluated how each aspect of cabinet behaviour and the efficiency of various materials and construction methods affects sound.



<b>Description</b>	3 way vented-box system	<b>Power Handling</b>	50W – 250W into 8 ohms on unclipped programme
<b>Drive Units</b>	1 x 25mm metal dome - high frequency 1 x 126mm Kevlar® - midrange 2 x 180mm Cobex® - bass	<b>Dimensions</b>	Height: 1040mm Width: 300mm Depth: 370mm
<b>Frequency Response</b>	42Hz – 20kHz ± 3dB on reference axis	<b>Finish</b>	Black Ash, Walnut, Rosewood Grille: Black Cloth
<b>Sensitivity</b>	90dB spl(2.83V 1m)		
<b>Nominal Impedance</b>	8 ohms (minimum 3.4 ohms)		

